

**DESCRIPTION**

H36RTAT is a Non-IC AIR-TITE™ remodel fixture for use with H3 3" series trims. For installation from below the ceiling. Housing is AIR-TITE rated to prevent airflow between heated or air conditioned spaces and unconditioned attic areas. For use with 120V GU10 lamps.

Non-IC Housing is AIR-TITE™ but insulation must be kept 3" away from all sides of housing.

<b>Catalog #</b>		<b>Type</b>	
<b>Project</b>			
<b>Comments</b>		<b>Date</b>	
<b>Prepared by</b>			

**SPECIFICATION FEATURES**

**Housing**

Formed of 20 gauge CRS with white powder coat finish.

**Remodel Plaster Frame**

"Easy clip" provided to secure plaster frame in ceiling while installation is being completed. Adjustable cam-locks provide positive lock of housing to plaster frame to complete housing installation.

**Junction Box**

- UL Listed for through branch circuit wiring (maximum 8 No.12 ga., 90°C conductors).
- Four 1/2" trade size conduit knockouts with true pry-out slots.
- Three Slide-N-Side™ wire traps

allow non-metallic sheathed cable to be installed without tools and without removing knockouts. Accepts a wide range of non-metallic sheathed cable.

- Allows wiring connections to be made outside the junction box.
- Simply insert the cable directly into the trap after connections are made.
- Three push-in wire connectors are included and eliminate the need for separate wire nuts.
- Accommodates the following standard non-metallic sheathed cable sizes: (US) #14/2, #14/3, #12/2, #12/3 (Canada) #14/2, #14/3, #12/2
- No-accessible ceiling installation

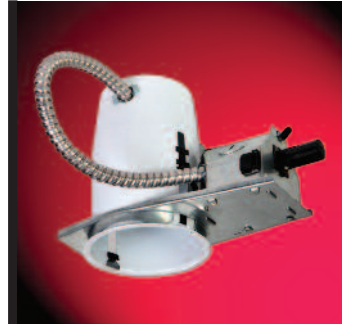
requires nonmetallic "NM" sheathed cable connection.

**Socket**

GU10 socket for 120V GU10 lamps.

**Labels**

- UL/cUL Listed 1598 Luminaire
- UL/cUL Damp Location Listed
- UL/cUL Listed for Feed Through
- Certified Under ASTM-E283 for air tight construction



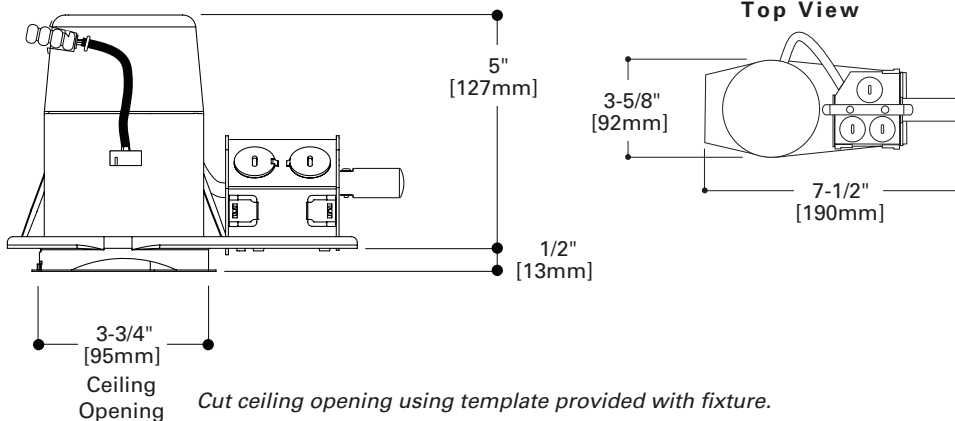
**H36RTAT**

**3" Non-Insulated Ceiling AIR-TITE™ Recessed Housing 120V GU10**

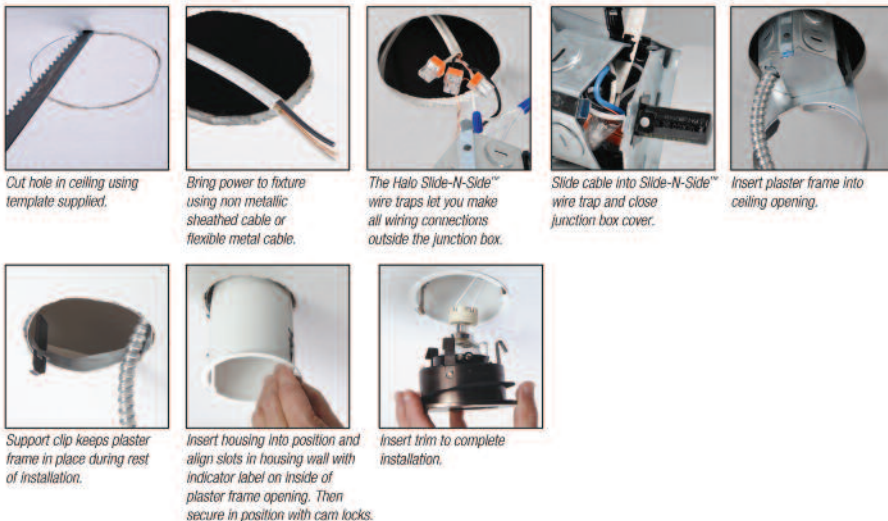
3" TRIMS

FOR USE IN NON-INSULATED CEILINGS

CAN BE USED IN INSULATED CEILINGS BUT INSULATION MUST BE KEPT 3" FROM ALL SIDES OF THE HOUSING



**REMODEL HOUSING INSTALLATION**



**ORDERING INFORMATION**

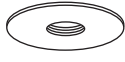
**SAMPLE NUMBER: H36RTAT-3001WHBB**  
Order housing and trims separately.

**Housing**

**Trims**

**H36RTAT**

**H36RTAT= 3" AIR-TITE™ Non-IC**  
Small Aperture Line  
Voltage GU10  
Remodel Housing



**Adjustable Pinhole Baffle - 15° Tilt**  
**50W 120V GU10**  
3001WHBB=White with Black Baffle  
3001BKBB=Black with Black Baffle  
3001SNBB=Satin Nickel with Black Baffle  
3001ACBB=Antique Copper with Black Baffle  
3001TBZBB=Tuscan Bronze with Black Baffle  
OD: 4-1/4" [108mm]



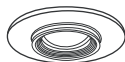
**Adjustable Gimbal- 35° Tilt**  
**50W 120V GU10**  
3009WHBB=White with Black Baffle  
3009WHWB=White with White Baffle  
3009BKBB=Black with Black Baffle  
3009SNBB=Satin Nickel with Black Baffle  
3009ACBB=Antique Copper with Black Baffle  
3009TBZBB=Tuscan Bronze with Black Baffle  
OD: 4-1/4" [108mm]



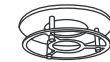
**Square Drop Glass**  
**50W 120V GU10**  
3018SGSC=Square Designer Drop Glass with Satin Chrome Trim  
OD: 4-1/4" [108mm]



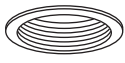
**Adjustable Pinhole Reflector- 15° Tilt**  
**50W 120V GU10**  
3002WHC=White with Clear Reflector  
3002BKC=Black with Clear Reflector  
3002SNC=Satin Nickel with Clear Reflector  
3002ACC=Antique Copper with Clear Reflector  
3002TBZC=Tuscan Bronze with Clear Reflector  
OD: 4-1/4" [108mm]



**Super Adjustable- 0 - 80° Adjustment**  
**50W 120V GU10**  
3010WH=White  
3010SN=Satin Nickel  
3010TBZ=Tuscan Bronze  
OD: 4-1/4" [108mm]



**Round Drop Glass**  
**50W 120V GU10**  
3019RGSC=Round Designer Drop Glass with Satin Chrome Trim  
OD: 4-1/4" [108mm]



**Adjustable Baffle- 35° Tilt**  
**50W 120V GU10**  
3003WHBB=White with Black Baffle  
3003WHWB=White with White Baffle  
3003BKBB=Black with Black Baffle  
3003SNB=Satin Nickel with Satin Nickel Baffle  
3003ACB=Antique Copper with Antique Copper Baffle  
3003TBZB=Tuscan Bronze with Tuscan Bronze Baffle  
OD: 4-1/4" [108mm]



**Square Adjustable - 15° Tilt**  
**50W 120V GU10**  
3011WHBB=White with Black Baffle  
3011WHWB=White with White Baffle  
3011BKBB=Black with Black Baffle  
3011SNBB=Satin Nickel with Black Baffle  
3011ACBB=Antique Copper with Black Baffle  
3011TBZBB=Tuscan Bronze with Black Baffle  
OD: 4-1/4" [108mm]



**Wall Wash**  
**50W 120V GU10**  
3020WW=White Downlight & Wall Wash with Integral Kick Reflector  
OD: 4-1/4" [108mm]



**Adjustable Reflector- 35° Tilt**  
**50W 120V GU10**  
3004WHC=White with Clear Reflector  
3004BKC=Black with Clear Reflector  
3004SN=Satin Nickel with Satin Nickel Reflector  
3004AC=Antique Copper with Antique Copper Reflector  
3004TBZ=Tuscan Bronze with Tuscan Bronze Reflector  
3004WHH=White with Haze Reflector  
3004WHW=White with White Reflector  
OD: 4-1/4" [108mm]



**Square Regressed Lens Adjustable Showerlight - 15° Tilt**  
**50W 120V GU10**  
3012WHBB=White with Black Baffle  
3012WHWB=White with White Baffle  
3012BKBB=Black with Black Baffle  
3012SNBB=Satin Nickel with Black Baffle  
3012ACBB=Antique Copper with Black Baffle  
3012TBZBB=Tuscan Bronze with Black Baffle  
OD: 4-1/4" [108mm]



**Crossblade Reflector**  
**50W 120V GU10**  
3005WHC=White with Clear Reflector  
3005BKC=Black with Clear Reflector  
OD: 4-1/4" [108mm]



**Square Adjustable Gimbal - 35° Tilt**  
**50W 120V GU10**  
3013WH=White  
3013BK=Black  
3013SN=Satin  
3013AC=Antique Copper  
3013TBZ=Tuscan Bronze  
OD: 4-1/4" [108mm]



**Adjustable Slot Aperture- 35° Tilt**  
**50W 120V GU10**  
3006WHBB=White with Black Baffle  
3006BKBB=Black with Black Baffle  
3006SNBB=Satin Nickel with Black Baffle  
3006ACBB=Antique Copper with Black Baffle  
3006TBZBB=Tuscan Bronze with Black Baffle  
OD: 4-1/4" [108mm]



**Glass Cylinder - Frost Glass with Optional Blue Glass Included**  
**50W 120V GU10**  
3014FBWH=Frost/Blue Glass Cylinder with White Trim  
3014FBSC=Frost/Blue Glass Cylinder with Satin Chrome Trim  
OD: 4-1/4" [108mm]



**Regressed Lens Showerlight- 15° Tilt - Wet Location Listed**  
**50W 120V GU10**  
3007WHC=White with Clear Reflector  
3007PCC=Polished Chrome with Clear Reflector  
3007SN=Satin Nickel with Satin Nickel Reflector  
3007AC=Antique Copper with Antique Copper Reflector  
3007TBZ=Tuscan Bronze with Tuscan Bronze Reflector  
OD: 4-1/4" [108mm]



**Low Profile Glass Curve**  
**50W 120V GU10**  
3016FG=Frost Glass Curve  
3016BG=Blue Glass Curve  
3016AG=Amber Glass Curve  
OD: 4-1/4" [108mm]



**Showerlight - Wet Location Listed**  
**50W 120V GU10**  
3008FG=White Polymer and Glass Lens with Frosted Perimeter  
OD: 4-1/4" [108mm]



**All-Glass Frost Curve Showerlight - Wet Location Listed**  
**50W 120V GU10**  
3017FGS=All-Glass Frost Curve with Clear Glass Center - Showerlight  
OD: 4-1/4" [108mm]

**Accessories**

**Lamp**  
**Z28= GU10, 50W, 120V lamp**